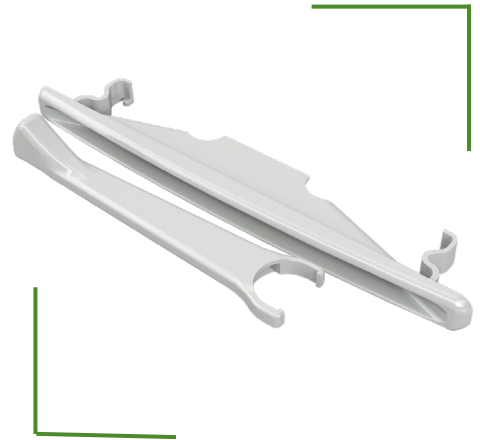


Encore®

Locks

Designed as an integrated system, Encore operators and locks provide unmatched elegance and performance. Encore multi-point locking system provides trouble-free operation with fully concealed locking and sequential engagement, providing the most complete locking system for casements, awnings and even round-top windows.

A construction handle allows operation prior to finishing. Encore locks have fewer parts, hold 400 lbs. per lock point, and are more resistant to insect and light infiltration.



PRODUCT HIGHLIGHTS

- The Encore system fits a wide variety of wood windows, and some select vinyl and fiberglass window systems.
- Encore's interchangeable handle and escutcheon allow anyone to easily change color and style.
- Handle action – built-in detents, reduced handle to jamb contact, and a tighter escutcheon means the Encore lock is more reliable and resistant
- Built-in construction handle allows windows to be operable prior to painting or staining.
- Stronger – tested to beyond DP 85 on a 36" x 72" window with only three lock points
- Tie bars offer 1-3 locking points and feature pre-located guides, meaning fewer screws and fewer parts to simplify hardware installation. Rated to 400 lbs. per lock point, depending upon the application
- Includes an option for securing round-top windows
- Easy to install – fewer screws, fewer parts

Encore[®]

Locks

AVAILABLE COLORS



Black



Matte Black



Antique Brass



Bright Brass



Faux Bronze



Bronze



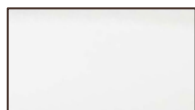
Chestnut Bronze



Oil Rubbed Bronze



Oil Rubbed Bronze 51



Bright Chrome



Brushed Antique Chrome



Satin Chrome



Aluminum



Clay Metallic



Satin Nickel



Beige



Coppertone



32 White



38 White



Snow White



White